



The Tokyo Metropolitan Edo-Tokyo Museum is scheduled to close for major renovations until spring 2026.

The Edo-Tokyo Museum Collection in Exhibitions at Other Locations

Exhibitions at Other Locations



Exhibition in other locations, "Visiting Exhibition by the Edo-Tokyo Museum"

February 22 (Sat) to 26 (Wed), 2025
Tokyo Metropolitan Art Museum,
LBF Citizen's Gallery 4, 1F Citizen's Gallery 4,
2F Citizen's Gallery 4

Continuing from the last fiscal year, permanent exhibitions from our museum will be traveling to the Tokyo Metropolitan Art Museum in Ueno. This exhibition focuses on interactive replicas of a box for gold coins, rickshaw, and other items familiar from our permanent exhibits. Related objects are also on display. There is also a special exhibition that includes *nishiki-e* (woodblock prints) and picture postcards showing scenes of Ueno changing with the times. Come and see the Edo-Tokyo Museum's richly varied collection and encounter the history and culture of Edo-Tokyo.



Tokyo, the Birth of a Modern City 1920s-1930s Modern Japanese Prints from the Edo-Tokyo Museum

November 6 (Wed), 2024 to
February 1 (Sat), 2025
Japan Cultural Institute in Paris (France)

Following our first event in fiscal 2022, we are holding part two of an exhibition in Paris of works from our collection. The exhibition presents the modernization of Tokyo in the 1920s and 30s through modern Japanese prints that have only rarely been shown in Paris. Visitors can see the dramatic changes in the city of Tokyo as these famous works from the Edo-Tokyo Museum collection are showcased to the world.

Touring Exhibition

Edo-Tokyo Museum Exhibition Discovering the Wonders of Edo-History

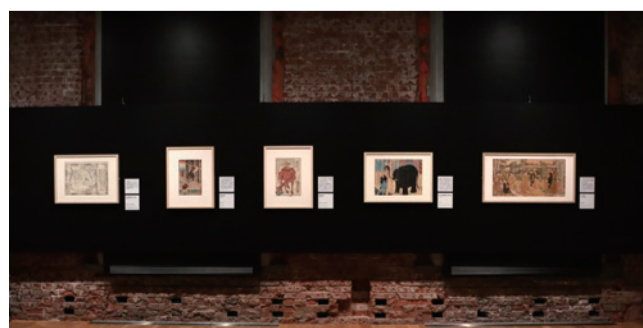
This exhibition is a collaboration with QuizKnock, a knowledge media group originating from the University of Tokyo. We have organized touring exhibitions from the extensive Edo-Tokyo Museum Collection, focusing on diverse pictures, and historical objects that show how people lived at that time, selected from the "Edo zone" of permanent exhibits that visitors cannot view during our museum's closure. At this exhibition, visitors can experience popular interactive exhibits from our permanent collection, such as a *daimyō kago* (palanquin for feudal lords) and *botefuri* (shoulder pole with baskets for carrying wares for sale). The exhibition was held in 2024 at the Okazaki City Museum and the Shizuoka City Museum of History, and is scheduled to be held from April 2025 at the Tohoku History Museum (Miyagi).



Okazaki City Museum

Animals, Animals, Animals! From the Edo-Tokyo Museum Collection

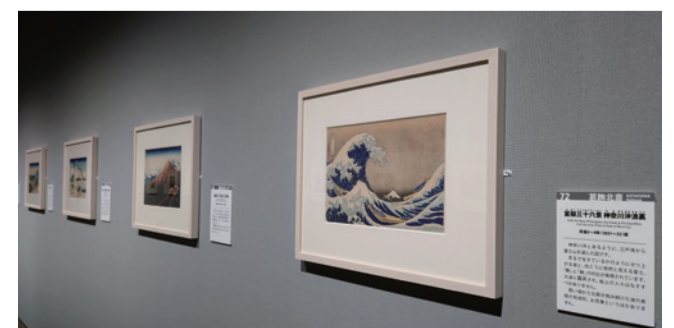
Animals were involved in people's lives in various ways in Edo-Tokyo, which had developed into a large city. Dogs and cats were kept as pets. Oxen and horses worked with people. People observed birds and insects... This exhibition presents the daily lives of people and animals through approximately 230 items from our museum's collection. These include woodblock prints, books, craft objects, and toys featuring vividly depicted animals. The exhibition was held at the Tokyo Station Gallery and the Yamanashi Prefectural Museum in 2024, and is scheduled to travel to the Aichi Prefectural Museum of Art from April 2025, and the Suiboku Museum, Toyama from July 2025.



Tokyo Station Gallery

Hokusai and Hiroshige: The Mount Fuji Challenges from the Edo-Tokyo Museum Collection

Since April 2024, the exhibition "Hokusai and Hiroshige: The Mount Fuji Challenges from the Edo-Tokyo Museum Collection" has traveled to the Nakanoshima Kosetsu Museum of Art (Osaka), the Okayama Prefectural Museum of Art, and the Oita Prefectural Museum of Art. The keyword of this exhibition is the "challenges" faced by these two artists in their famous works, such as all 46 images from Katsushika Hokusai's Thirty-six Views of Mt. Fuji including his signature work Under the Wave off Kanagawa, and Utagawa Hiroshige's Fifty-Three Stations of the Tōkaidō Road and One Hundred Famous Views of Edo. A total of more than 100,000 people visited the exhibition at these venues.



Nakanoshima Kosetsu Museum of Art

Development of Culture through Overseas Exchange

-Participation in the 2024 Japan-China-Korea International Symposium on Museum -

Text by Tenseki Cho, Curator



Photo by the author. Japan-China-Korea International Symposium on Museum

Around the 16th century, a school of painting called the Wu School became popular in Suzhou Province in Southern China. Painters of this school attached the utmost importance to studying old paintings in the process of forming their own style. They believed they could only paint good works by repeatedly copying old paintings from the Tang to the Yuan dynasties, and understanding the techniques, styles, ideas, and other approaches of the great masters. At the same time, there was a considerable development in China in the publishing industry, and picture books and treatises on painting, exhaustively covering artists from past to present, were very popular.

These books were also brought to Japan in large numbers by trading vessels, starting in the 17th century. Artists of the Rinpa school and the Kanō school learned about old Chinese paintings from these imported woodblock-printed books. Through overseas exchange, artists active in different eras in China and Japan formed their own unique styles from similar models. My own research has previously concerned Eastern painting, with a focus on the styles of the Wu school, and international cultural exchange was an important key for me in understanding the history of painting.

Today, there are various avenues of international exchange, and as part of that, the Edo-Tokyo Museum has previously held the Japan-China-Korea International Symposium on Museum, with the host rotating every year, together with three other museums: the Beijing Capital Museum, the Shenyang Imperial Palace Museum, and the Seoul Museum of History. Representatives of each museum have made presentations at these symposiums. I had the opportunity to participate in the most recent symposium, which was held in Tongzhou district, Beijing, China, an area that has developed rapidly in recent years as a destination for relocating urban functions. There have been exhibitions and interactive experience facilities incorporating cutting-edge technology at the three major cultural buildings in Beijing's Tongzhou district (the Beijing Performing Arts Centre, Grand Canal Museum of Beijing, and the Beijing City Library) completed in 2023 as part of the urban function relocation. At this symposium, the discussion focused on the theme of "Innovation and Future

Development of Museum Education," and our museum reported on the activities of our Edohaku student support staff and our digital archive "ToMuCo." Participants showed strong interest. The issues relating to museum education faced by each museum are diverse, but there is a shared recognition that school collaboration and new methods using digital technology are a first step toward resolving those issues.

Overseas exchange is an important factor which promotes cultural development. Through this symposium, I reconfirmed that international exchange and person-to-person exchange deepen cultural connections, and help further museum development. Going forward, I will continue to deepen my own research, while making use of what I have learned through this experience.



Rekidai Meikō Gafu (Collection of Paintings of Wise Leaders of the Past)
Tani Buncho, Moga (Imitation) 1798 (Kansei 10) Collection ID 88208182